



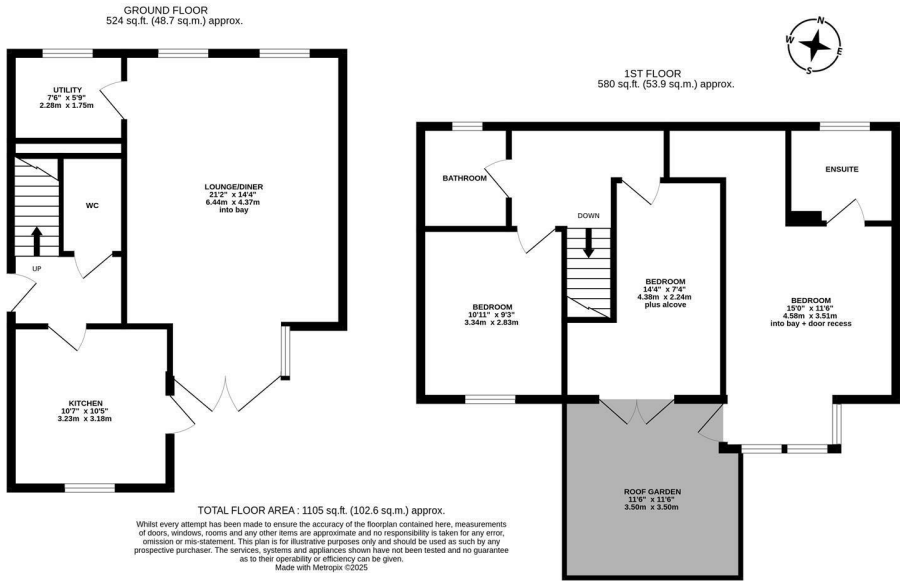


STYLISH, MODERN STYLE HOME with a SOUTH FACING REAR GARDEN and a RAISED ROOF GARDEN and STUNNING RIVER VIEWS! This great three bedroom home is ideally situated on Merchants Wharf, within the heart of the St. Peters Basin Development. St. Peter's Basin, originally constructed in 1989, and on the banks of the Tyne, offers a wonderful quality of life close to the centre of Newcastle. The property is located on the riverside, south of the central marina and offers immediate access to pleasant riverside walks to Ouseburn and on to Newcastle's Quayside.

The accommodation briefly comprises: entrance hall with stairs to first floor; downstairs WC; 21ft lounge diner with dual windows and French doors leading out to the rear garden; utility room; kitchen with fitted units, work surfaces, some integrated appliances, spot lighting and side door access to the garden. The first floor landing gives access to; three double bedrooms, bedroom one with an en-suite shower room and access to a delightful roof garden providing un-interrupted river views; bedroom two with French doors, also providing access to the roof garden; bathroom, complete with three piece suite.

Externally, along with the roof garden, an enclosed south facing garden laid mainly to lawn with a raised decked patio seating area, raised, well stocked planters and fenced boundaries. Early viewings are advised to truly appreciate this great home. EPC C

Stylish Mid-Terrace Home | Three Bedrooms | 1,105 Sq ft (102.6m2) | Lounge Diner | Utility | Kitchen | Bathroom | En-Suite Shower Room | Roof Garden & Rear Garden | River Views | Great Location | Council Tax Band C | EPC: C



Offers Over £320,000

IMPORTANT NOTE: These particulars and the descriptions and measurements herein do not constitute representation and whilst every effort has been made to ensure accuracy, this cannot be guaranteed.

